



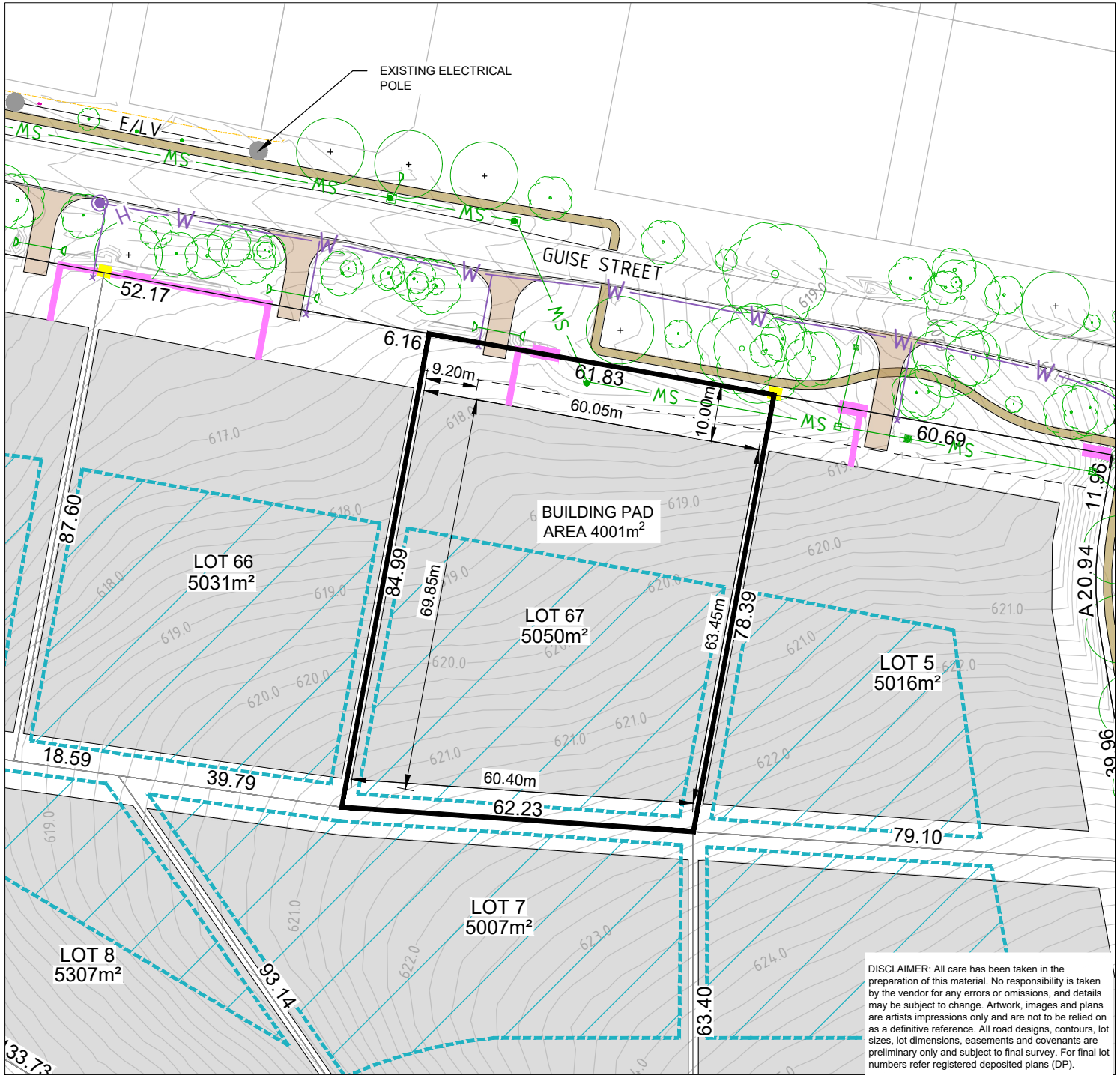
WOODBURY RIDGE

LOT 67

SUTTON NSW

VILLAGE LOT

LOT DISCLOSURE PLAN



DISCLAIMER: All care has been taken in the preparation of this material. No responsibility is taken by the vendor for any errors or omissions, and details may be subject to change. Artwork, images and plans are artists impressions only and are not to be relied on as a definitive reference. All road designs, contours, lot sizes, lot dimensions, easements and covenants are preliminary only and subject to final survey. For final lot numbers refer registered deposited plans (DP).

LOT LAYOUT - SCALE 1:1000 (A4)

REVISION E DATE 11-07-2023

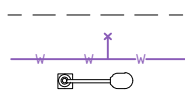
LEGEND

LOCALITY PLAN

LOT BOUNDARY



EASEMENT (Telstra, Stormwater & Electrical)
BORE RETICULATED WATER MAIN & TIE
STREETLIGHT
SUBSTATION



EXISTING TREE



BUILDING ENVELOPE



PROPOSED STREET TREE



FINISHED SURFACE CONTOURS - MAJOR (1.0m)



FINISHED SURFACE CONTOURS - MINOR (0.2m)



SPECIAL EFFLUENT MANAGEMENT ZONE



BLOCK AREA / BOUNDARY LENGTH (m)



STORMWATER (Pit, Culvert, Headwall + Rock Treatment)



STORMWATER DRIVEWAY CULVERT



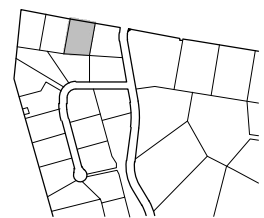
PEDESTRIAN PATH - 1.5m



PLANTING BY DEVELOPER



REFER TO FENCING BY DEVELOPER PLAN AND PROPERTY ENTRANCE PLAN FOR BLOCK FENCING AND GATE DETAILS.



© Spiire Australia Pty Ltd All Rights Reserved

This document is produced by Spiire Australia Pty Ltd solely for the benefit of and use by the client in accordance with the terms of the retainer. Spiire Australia Pty Ltd does not and shall not assume any responsibility or liability whatsoever to any third party arising out of any use or reliance by third party on the content of this document.

file name: 310032_Woodbury_Ridge_LDP.dwg, layout name: 4, plotted by: Chelsea Corcoran
 file location: \\spiire.com.au\candiala\da\ra\313\10032\Civil\ACAD\lot_disclosure_plan\ACAD\lot_disclosure_plan\ACAD\lot_disclosure_plan.dwg Sheet ##### of ##### Sheets