



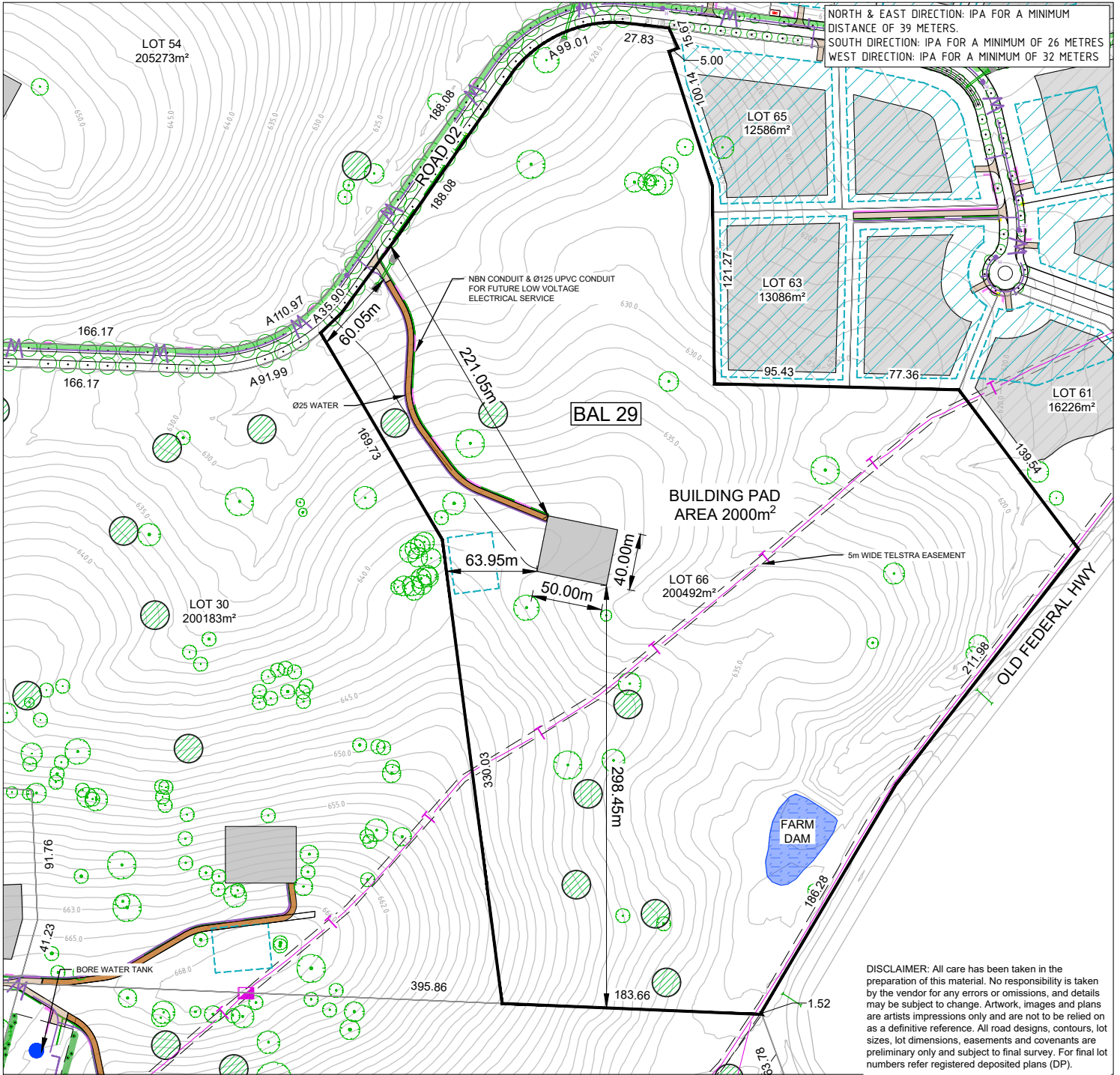
WOODBURY RIDGE

LOT 66

SUTTON NSW

STEWARDSHIP LOT

LOT DISCLOSURE PLAN



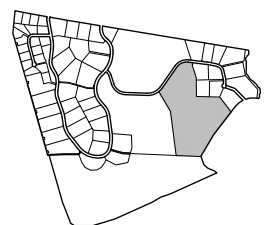
LOT LAYOUT - SCALE 1:4000 (A4)

REVISION F

DATE 11-07-2023

LEGEND

LOT BOUNDARY		EASEMENT (Telstra, Stormwater & Electrical)		EXISTING TREE	
BUILDING ENVELOPE		BORE RETICULATED WATER MAIN & TIE		PROPOSED STREET TREE	
FINISHED SURFACE CONTOURS - MAJOR (1.0m)		STREETLIGHT		INDICATIVE EFFLUENT MANAGEMENT ZONE	
FINISHED SURFACE CONTOURS - MINOR (0.2m)		SUBSTATION		EQUESTRIAN ROUTE - 3.0m	
BLOCK AREA / BOUNDARY LENGTH (m)	5000m ² 4.54	ELECTRICAL PILLAR / PIT		PLANTING BY DEVELOPER	
STORMWATER (Pit, Culvert, Headwall + Rock Treatment)		NBN PIT AND TIE		RELOCATED FELLED TREES	
STORMWATER DRIVEWAY CULVERT		DRIVEWAY BY DEVELOPER (TWO COAT SEAL)		REFER TO FENCING BY DEVELOPER PLAN AND PROPERTY ENTRANCE PLAN FOR BLOCK FENCING AND GATE DETAILS.	



© Spire Australia Pty Ltd All Rights Reserved

This document is produced by Spire Australia Pty Ltd solely for the benefit of and use by the client in accordance with the terms of the retainer. Spire Australia Pty Ltd does not and shall not assume any responsibility or liability whatsoever to any third party arising out of any use or reliance by third party on the content of this document.

file name: 310032_Woodbury_Ridge_LDP_STEWARDSHIP.dwg layout: name: 66 plotted by: Chelsea Corcoran
file location: G:\31\310032\civil\ACAD\LOT Disclosure Plan\ACAD plot date: 11/07/2023 7:34 AM Sheet: ##### of ##### Sheets